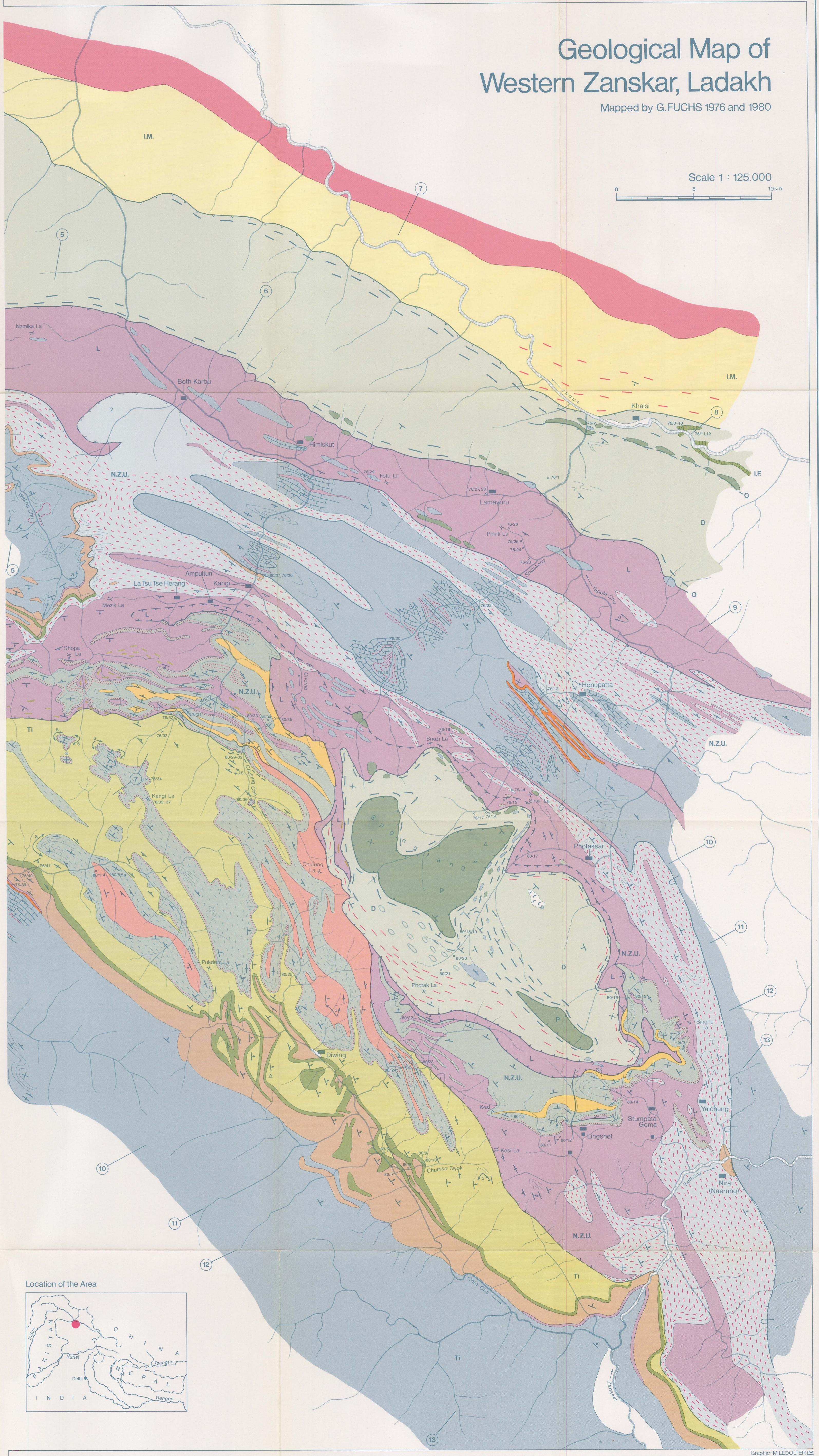
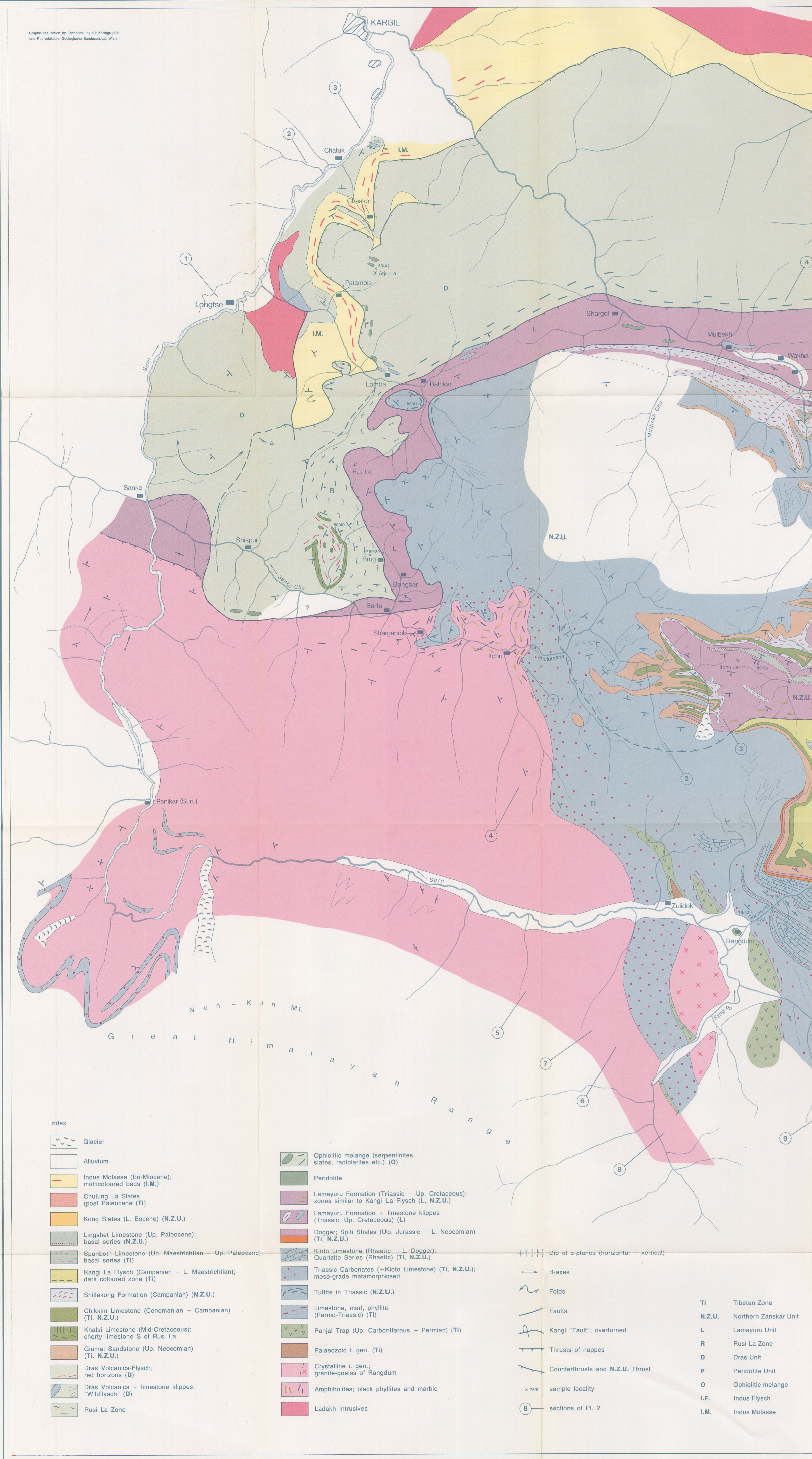


Graphic realization by Fachbereich für Kartographie
und Reproduktion, Geologische Bundesanstalt Wien

Geological Map of Western Zaskar, Ladakh

Mapped by G. FUCHS 1976 and 1980

Scale 1 : 125.000
0 5 10 km



- Index**
- Glacier
 - Alluvium
 - Indus Molasse (Eo-Miocene); multicoloured beds (I.M.)
 - Chulung La Slates (post Paleocene (TI))
 - Kong Slates (L. Eocene) (N.Z.U.)
 - Lingshet Limestone (Up. Paleocene); basal series (N.Z.U.)
 - Spankoth Limestone (Up. Maestrichtian - Up. Paleocene); basal series (TI)
 - Kangi La Flysch (Campanian - L. Maestrichtian); dark coloured zone (TI)
 - Shillakong Formation (Campanian) (N.Z.U.)
 - Chikkim Limestone (Cenomanian - Campanian) (TI, N.Z.U.)
 - Khalsi Limestone (Mid-Cretaceous); cherty limestone S of Rusi La
 - Giural Sandstone (Up. Neocomian) (TI, N.Z.U.)
 - Dras Volcanics-Flysch; red horizons (D)
 - Dras Volcanics + limestone klippen; "Wildflysch" (D)
 - Rusi La Zone

- Ophiolitic melange (serpentinites, slates, radiolites etc.) (O)
- Peridotite
- Lamayuru Formation (Triassic - Up. Cretaceous); zones similar to Kangi La Flysch (L, N.Z.U.)
- Lamayuru Formation + limestone klippen (Triassic, Up. Cretaceous) (L)
- Dogger: Spili Shales (Up. Jurassic - L. Neocomian) (TI, N.Z.U.)
- Kiozi Limestone (Rhaetic - L. Dogger); Quartzite Series (Rhaetic) (TI, N.Z.U.)
- Triassic Carbonates (+Kiozi Limestone) (TI, N.Z.U.); meso-grade metamorphosed
- Tuffite in Triassic (N.Z.U.)
- Limestone, marl, phyllite (Permo-Triassic) (TI)
- Panjal Trap (Up. Carboniferous - Permian) (TI)
- Palaeozoic i. gen. (TI)
- Crystalline i. gen.; granite-gneiss of Rangdum
- Amphibolites; black phyllites and marble
- Ladakh Intrusives

- Dip of s-planes (horizontal - vertical)
- B-axes
- Folds
- Faults
- Kangi "Fault"; overturned
- Thrusts of nappes
- Counterthrusts and N.Z.U. Thrust
- sample locality
- sections of Pl. 2

- TI Tibetan Zone
- N.Z.U. Northern Zaskar Unit
- L Lamayuru Unit
- R Rusi La Zone
- D Dras Unit
- P Peridotite Unit
- O Ophiolitic melange
- I.F. Indus Flysch
- I.M. Indus Molasse

